

Dairy Road Bridge Replacement

City Council Design Approval
November 17, 2025

dairyroadbridge.org



Project Purpose

- Current bridge was built in 1953, with a 50-year expected design life (2003)
- Bridge condition is rated “poor”
- Inspected annually, including most recently spring 2025
- Load restricted since 2007



A photograph of a highway bridge with cars driving underneath on a sunny day.

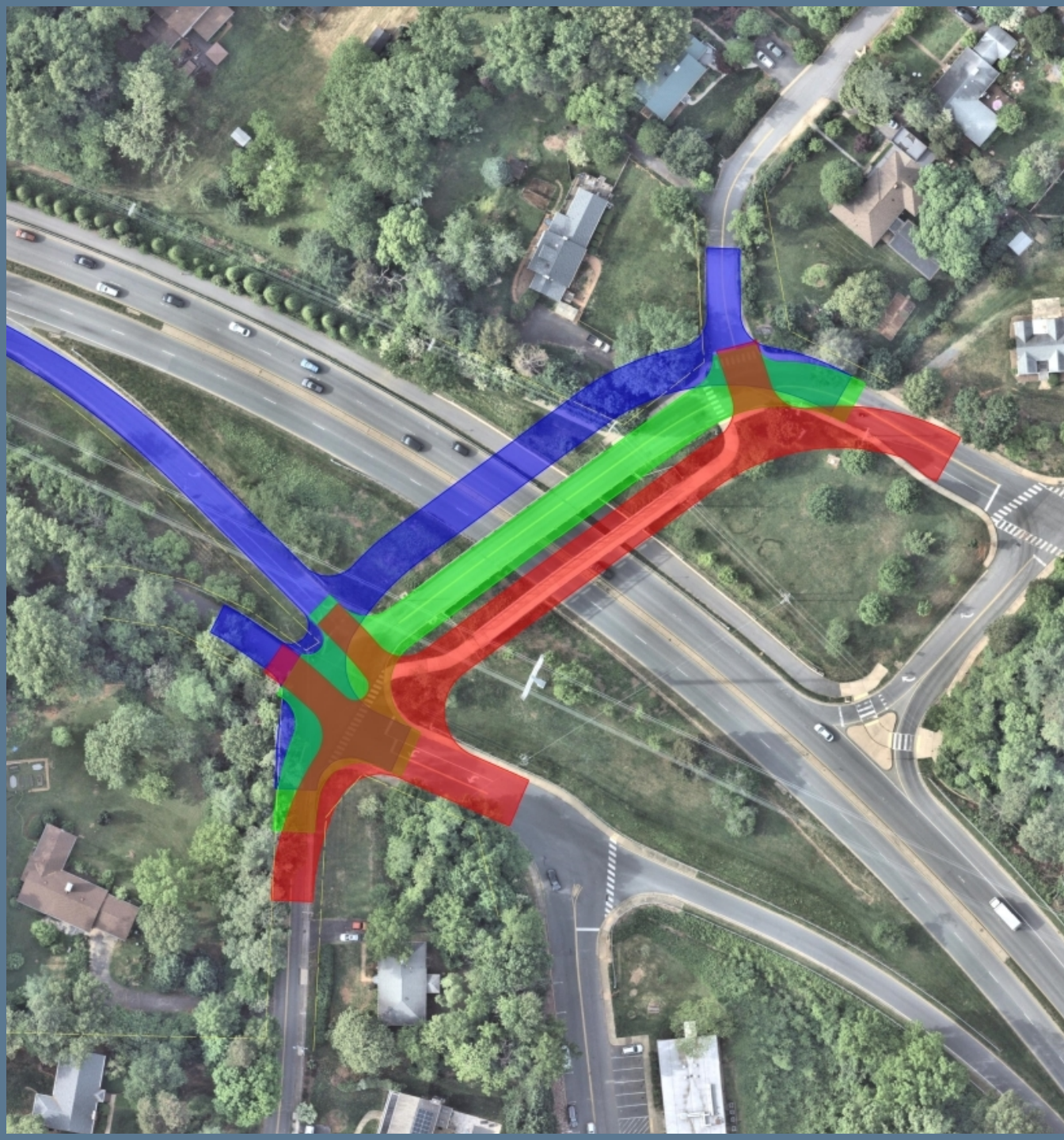
Background

- Awarded \$7.2 Million in VDOT “State of Good Repair” funding to begin in FY2021
- Funding increase for FY2024 to \$8.1 Million
- Funding increase for FY2025 to \$12.6 Million

Funding and Cost

- VDOT's STATE OF GOOD REPAIR Program
- State and Federal funds
- No City matching funds required
- Scope limited to “replace deteriorated elements in the most practical and cost-effective manner”
- **Funding and scope is fixed**





Alternatives Considered

- **Current plan: Demolish and rebuild in place (green option)**
- Eliminated options due to cost and/or other impacts:
 - A) Build parallel bridge (to **east** or **west**)
 - B) Build bridge in half
 - C) Innovative/accelerated methods to build “slide-in” bridge

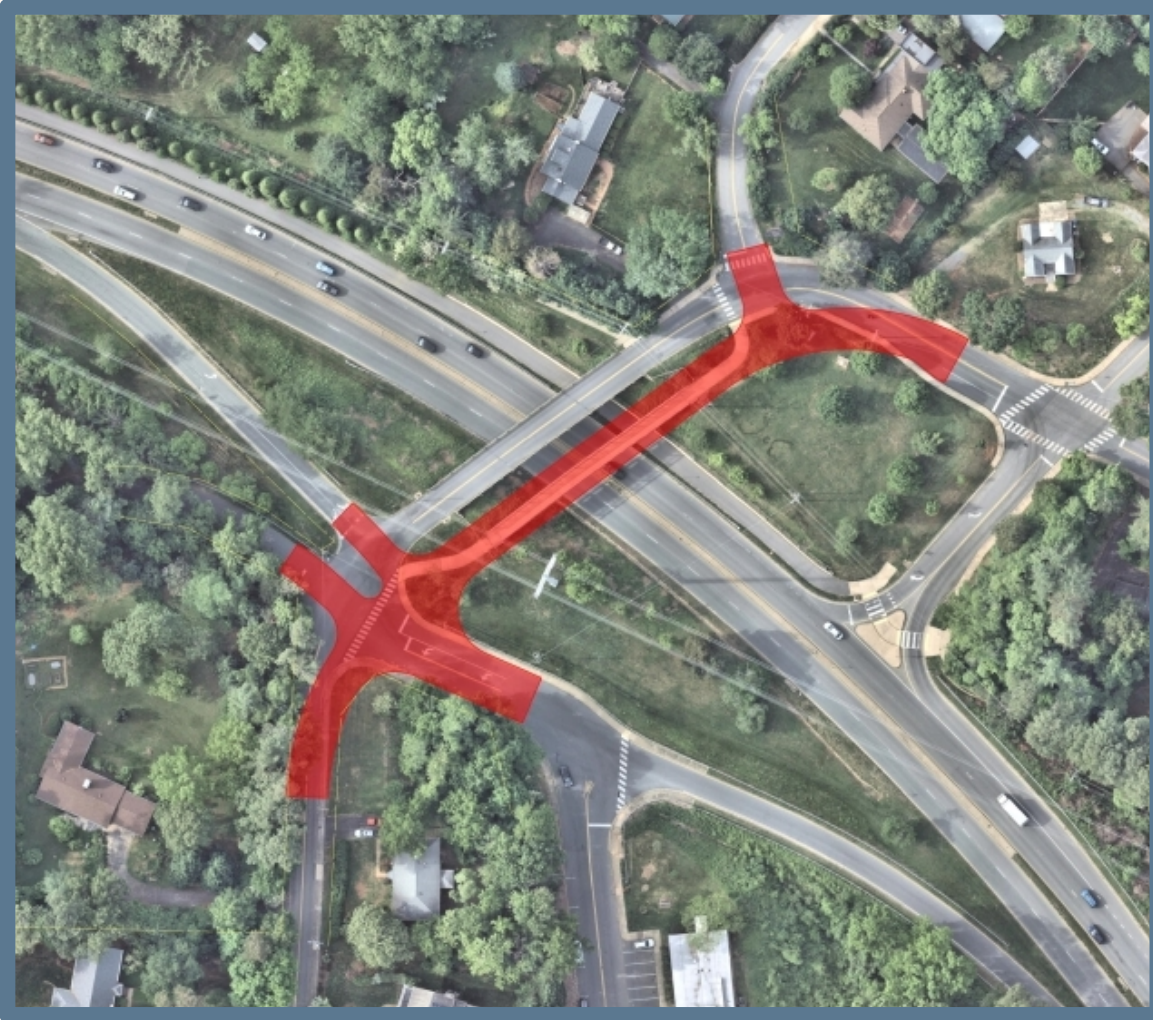
Parallel Alternatives



Western Alt.

- Costly impacts to 250-Bypass off-ramp to make up grade change
- Significant property impacts at St. Anne's Road
- Property impacts at southwest corner
- More significant utility impacts
- Redesign would delay construction approximately 18 months
- Estimated ~50% higher total project cost

Parallel Alternatives



Eastern Alt.

- Removes pedestrian bridge during construction
- More significant utility impacts
- Potential impacts to Dominion overhead transmission lines (extremely costly)
- Property impacts at Dairy Road and Gentry Lane
- Redesign would delay construction approximately 18 months
- Estimate ~45% higher total project cost

In-Place Alternative (Staged Construction)

Demolish half of bridge, maintain traffic on one half while reconstruction occurs on other half

- \$\$** More complex staging/prolonged construction
- \$\$** Uses temporary signal trailer for one-way operations
- \$\$** Signal wait times of 4+ minutes (higher in peak hours) (detour is 3 – 7 minutes)
- X** Existing bridge foundation prevents staged construction in place



Source: aasafetyinc.com

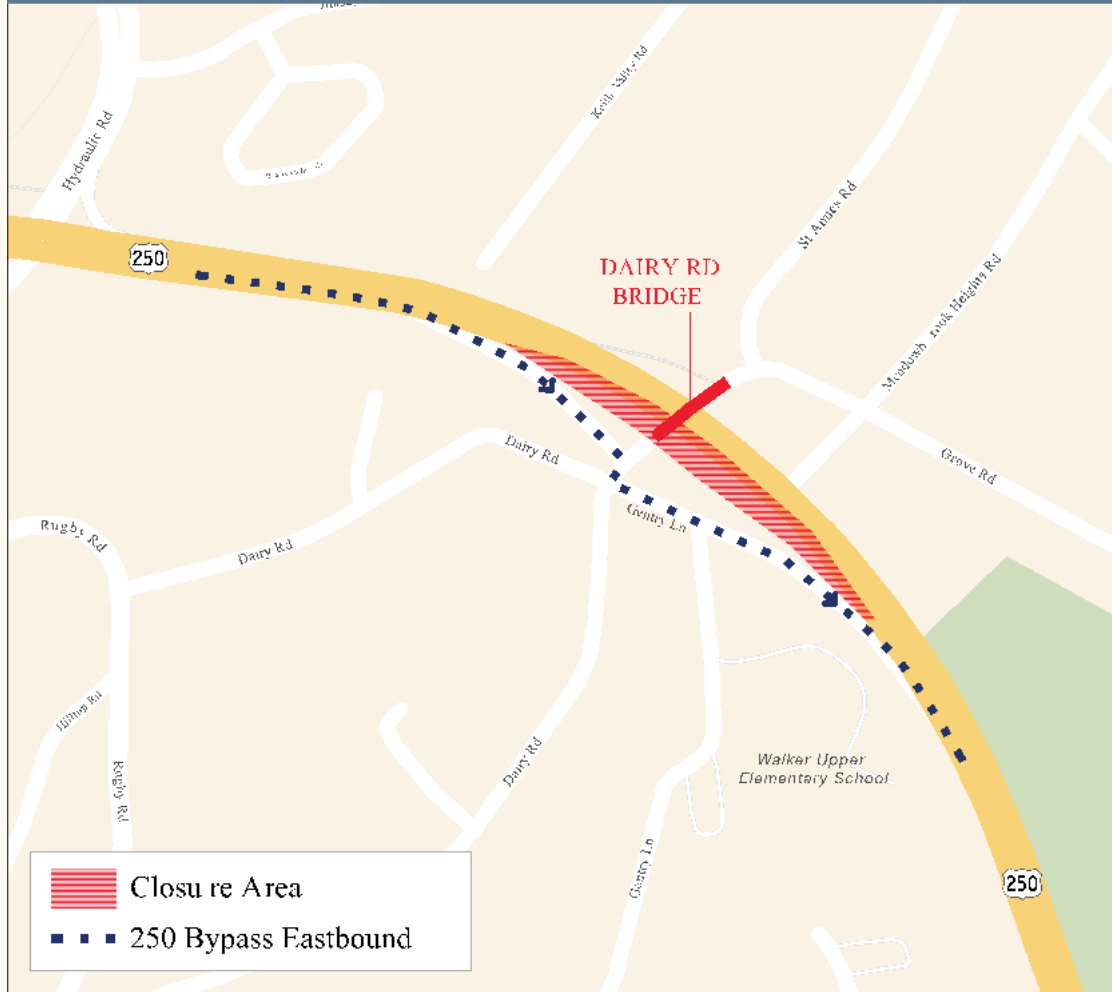


Detours

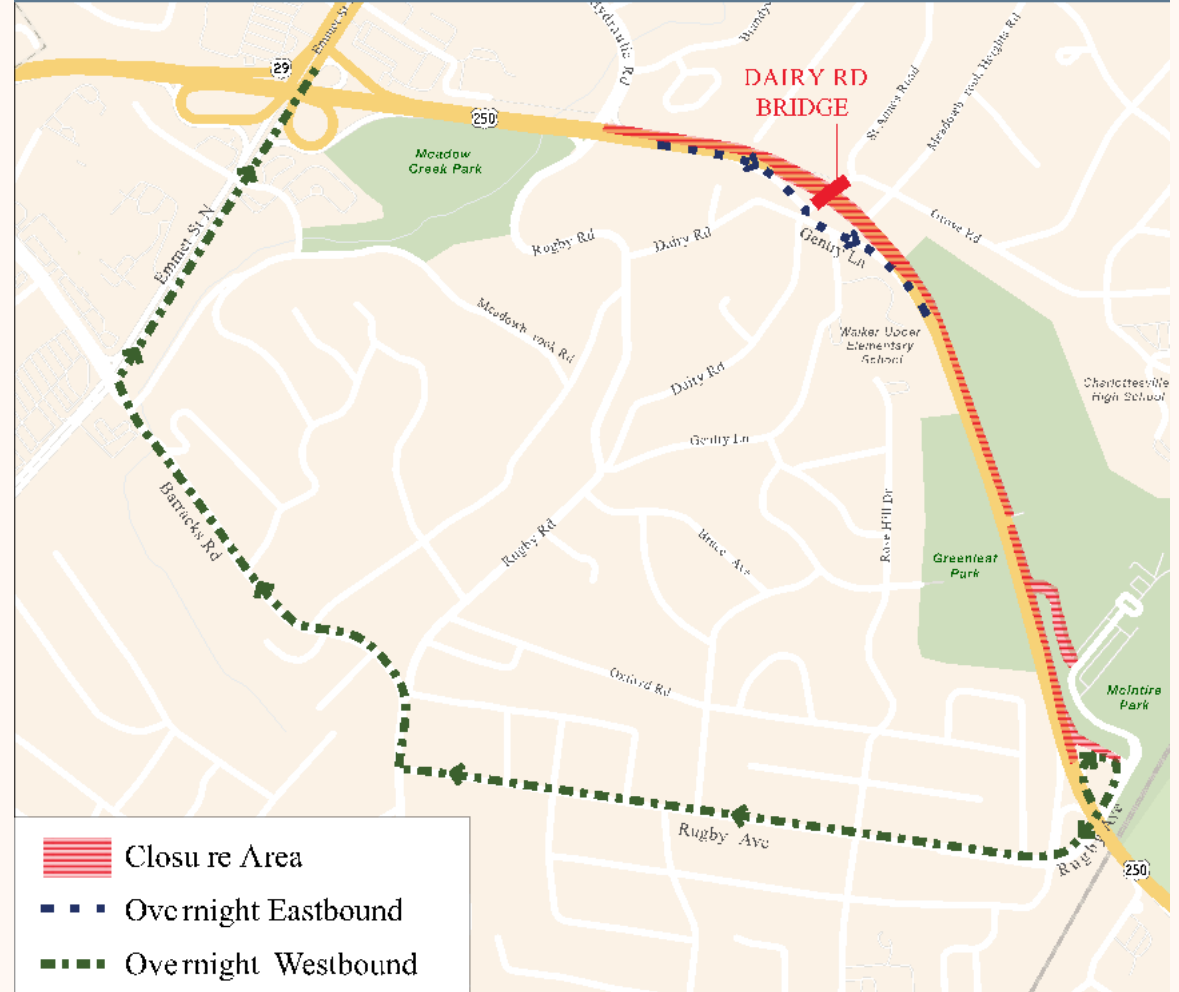
- Dairy Road bridge to be closed 12-14 months
- All local roadways remain open as options, however there will be two signed detour routes
- Temporary improvements to minimize impacts
 - Temporary signal at Route 250 eastbound off-ramp at Rugby Ave
 - Review signal timing at Hydraulic Road and Route 250 bypass
- Limited (night and/or weekend) closure of 250-Bypass

Detours

Staging Detour



Intermittent Overnight Detour



Public Hearing Summary

- Public Hearing was held at Walker Upper Elementary School, July 15, 2025
 - Total attendance (signed-in): 44 people
- Total of 16 official comments received
 - 14 via online form
 - 1 email
 - 1 verbal
- Online comments:
 - 38% in support of project
 - 23% neutral
 - 38% opposed

DESIGN PUBLIC HEARING - JULY 15, 2025

Dairy Road Bridge Replacement Project

VDOT PROJECT NUMBER: U000-104-365, UPC 118295

FEDERAL PROJECT NUMBER: STP-5104(326)

www.dairyroadbridge.org

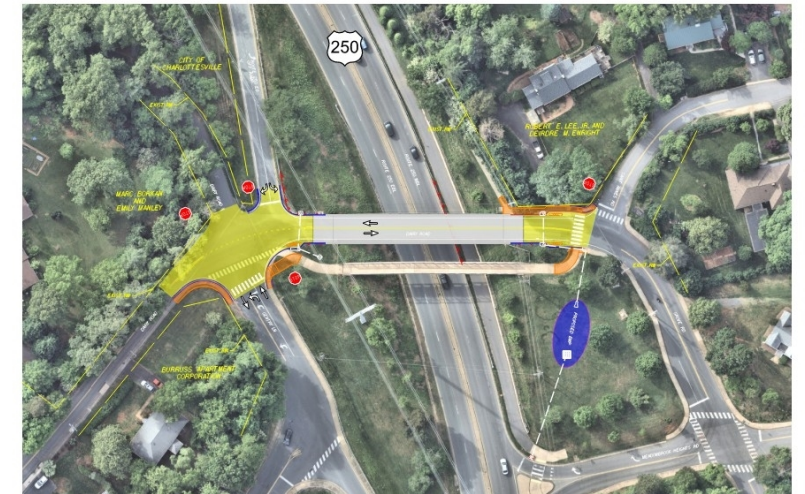


Design Public Hearing

Welcome to the Design Public Hearing for the Dairy Road bridge replacement project. This meeting provides an opportunity for any person, acting on his or her behalf or representing a group or governmental agency, to review the displayed project exhibits and give the City of

Charlottesville comments and/or suggestions on this project. Verbal comments will be accepted during tonight's hearing. Written statements may be submitted via comment forms, in writing to the City on or before July 25, 2025, via email or mail (address included on back page of this brochure).

Project Overview



City of Charlottesville



Public Comments

Three main themes/concerns:

1. Numerous requests were received to **make the bridge more visually appealing**.
 - a. The City will **add aesthetic and architectural treatments** to the proposed bridge design. These will include: painting the girders, adding a decorative steel railing in lieu of concrete-only barrier, and finishing all foundation walls with an architectural stone finish.
 - b. The bridge will more closely mimic the Route 250 bridge at McIntire Road/John W. Warner Parkway when construction is complete.



Public Comments

Three main themes/concerns:

2. The **length of construction** was commonly cited as **longer than desired**.
 - a. The City will explore ways to design the bridge in a way that allows for **quicker construction**
 - b. The City plans to explore **providing monetary incentives** for the contractor to open the bridge ahead of the contractual schedule



Public Comments

Three main themes/concerns:

3. The **impacts of the proposed detour** were a common concern. This was the most-cited complaint of the project.
 - a. The City plans to closely monitor traffic patterns once the detour is implemented to see if additional mitigation measures are necessary.
 - b. Mitigations may include:
 - Signal timing adjustments
 - Temporary changes to signing/markings along affected routes
 - Increased traffic enforcement on affected neighborhood streets



Projected Schedule

Milestone	Planned Date
Public Hearing	July 15, 2025
Advertisement for Construction	August 2026
Construction Activities Begin	December 2026
Bridge Closed	February 2027
New Bridge Reopened	March 2028
Construction Complete	May 2028



Questions?

dairyroadbridge.org

